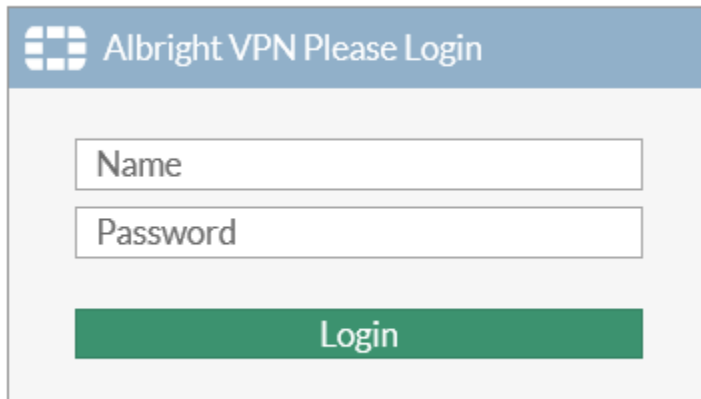


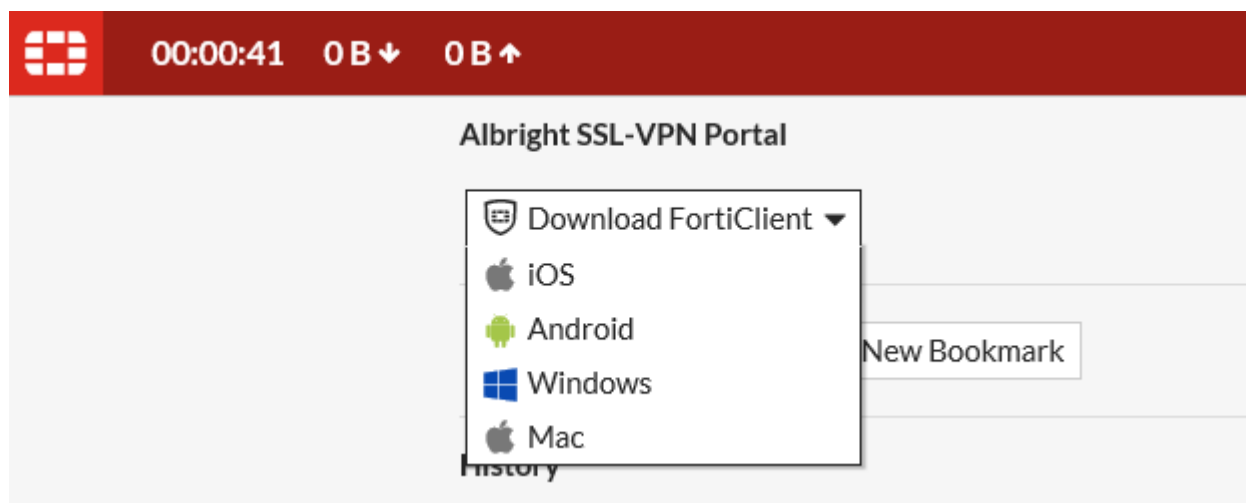
How to setup FortiClient to securely connect to Albright

1. Using your preferred browser navigate to <https://remoteaccess.albright.edu>.
2. Enter your Lionlink credentials at the Albright VPN login prompt:



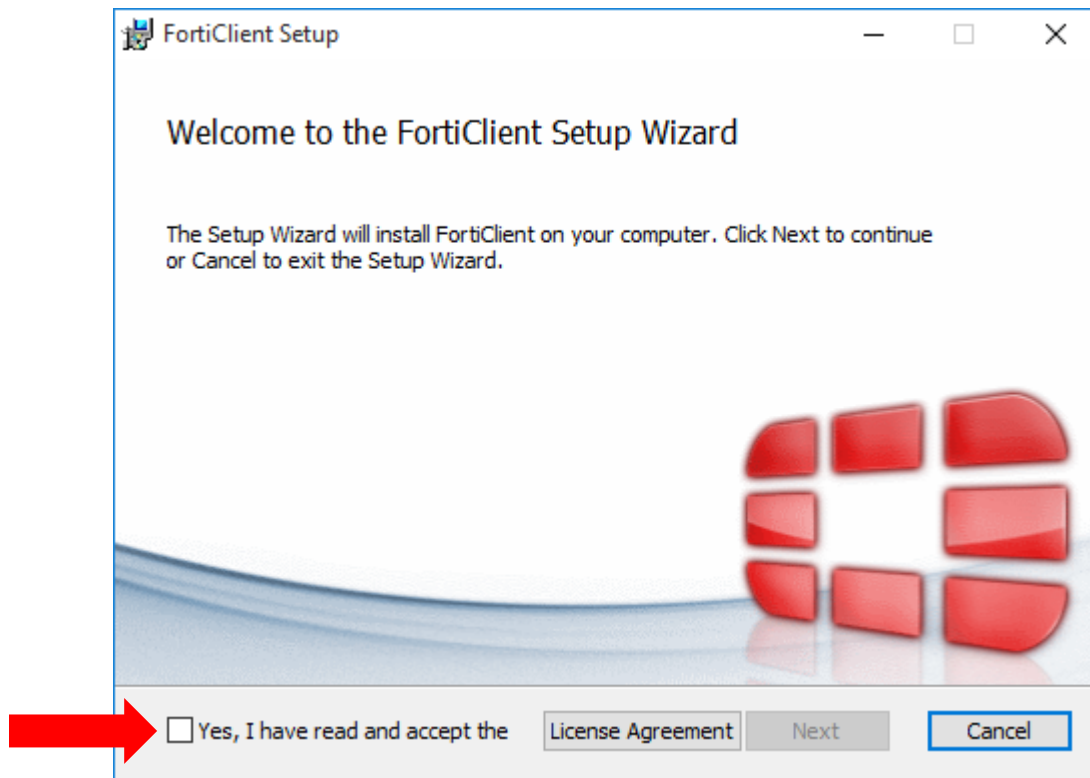
The image shows a login form titled "Albright VPN Please Login". It features a blue header with the title and a logo. Below the header are two input fields: "Name" and "Password". At the bottom of the form is a green button labeled "Login".

3. Select **Download FortiClient** from the VPN portal page and select the appropriate operating system:

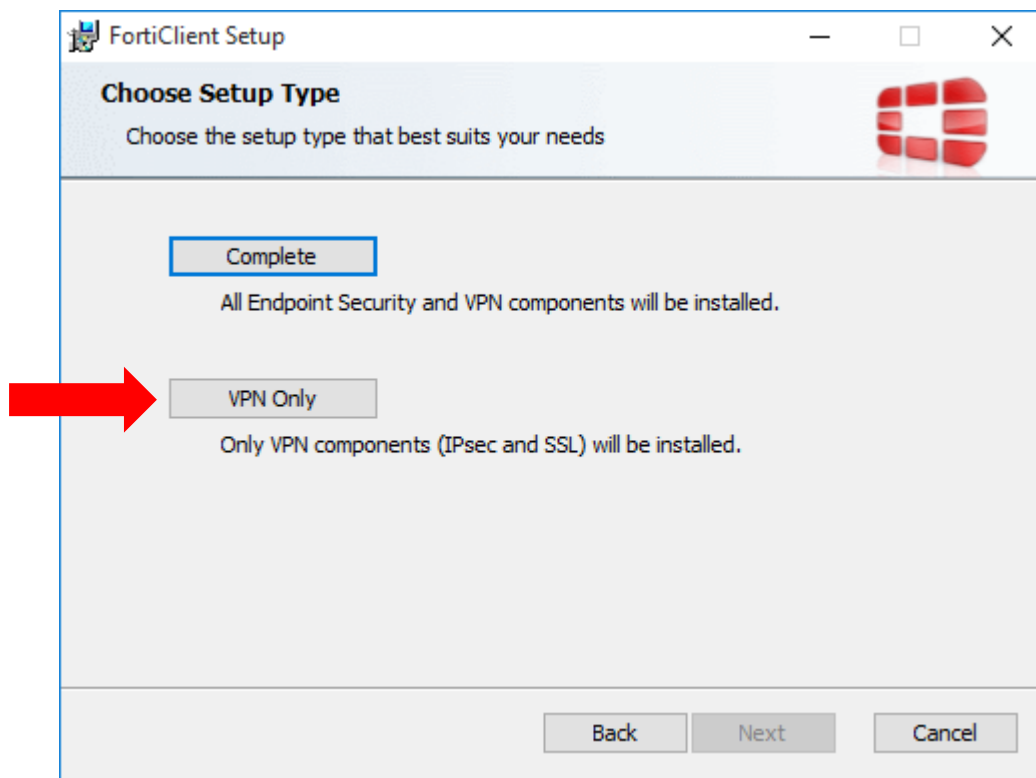


Note: The FortiClient will automatically download if you select Windows or Mac from the drop-down list. If you select iOS or Android you will be redirected to the store page.

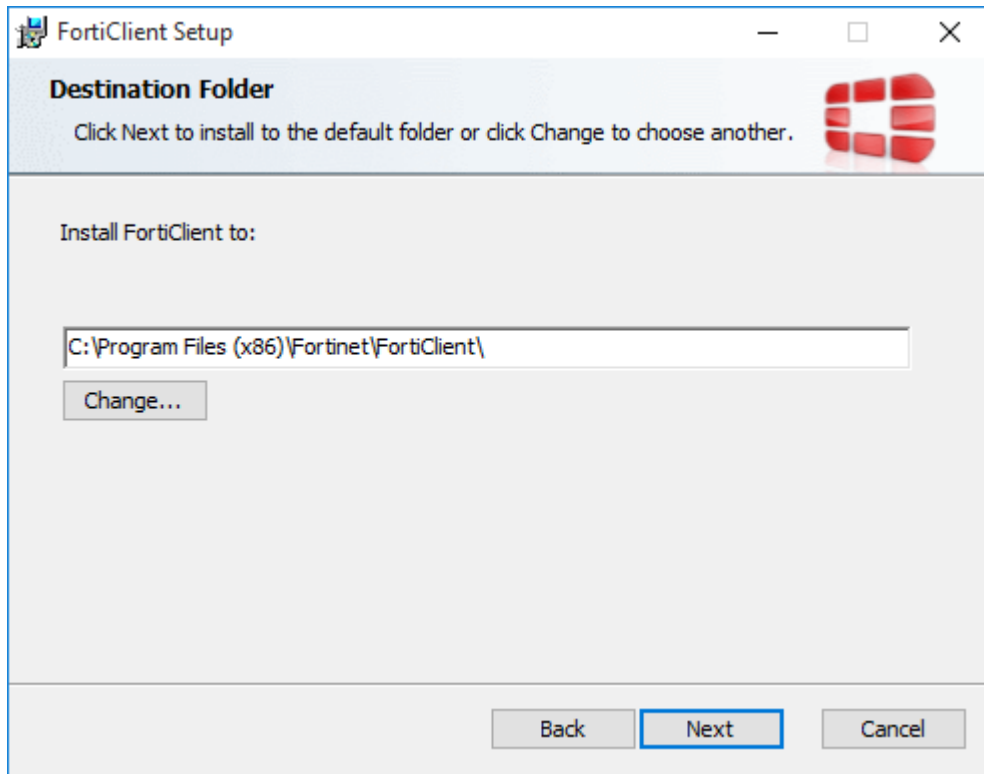
4. For Windows installations, run the FortiClient installer, and when prompted, accept the license agreement by selecting the check box in the lower left corner and then click **Next**.



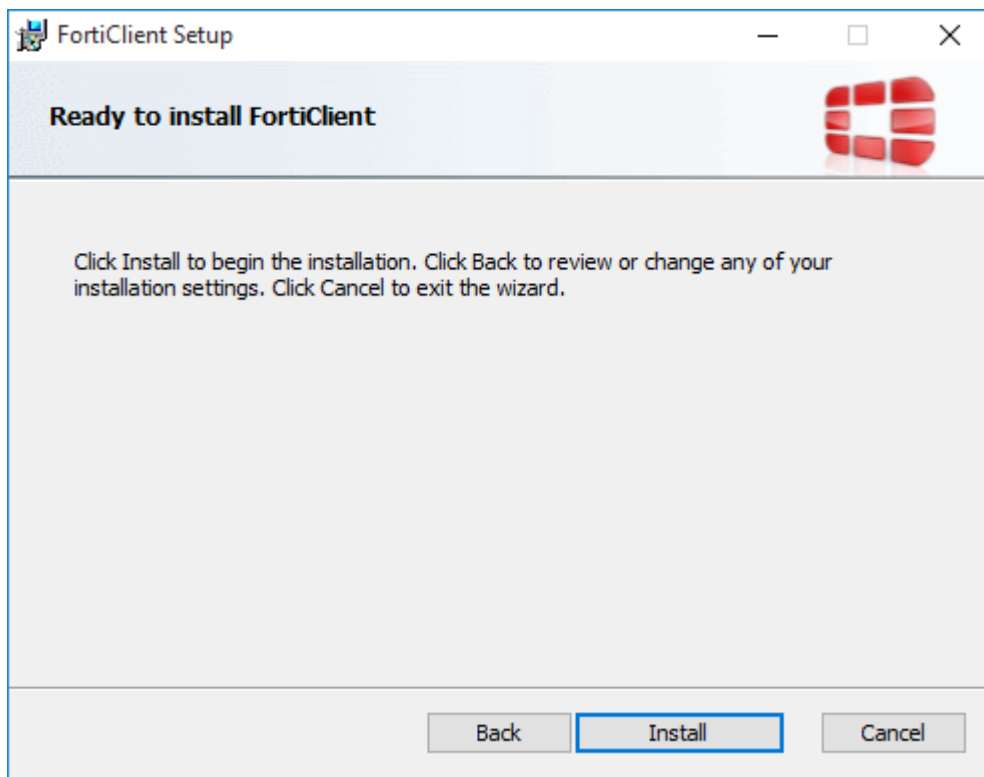
5. **Important:** Select **VPN Only** for the setup type.



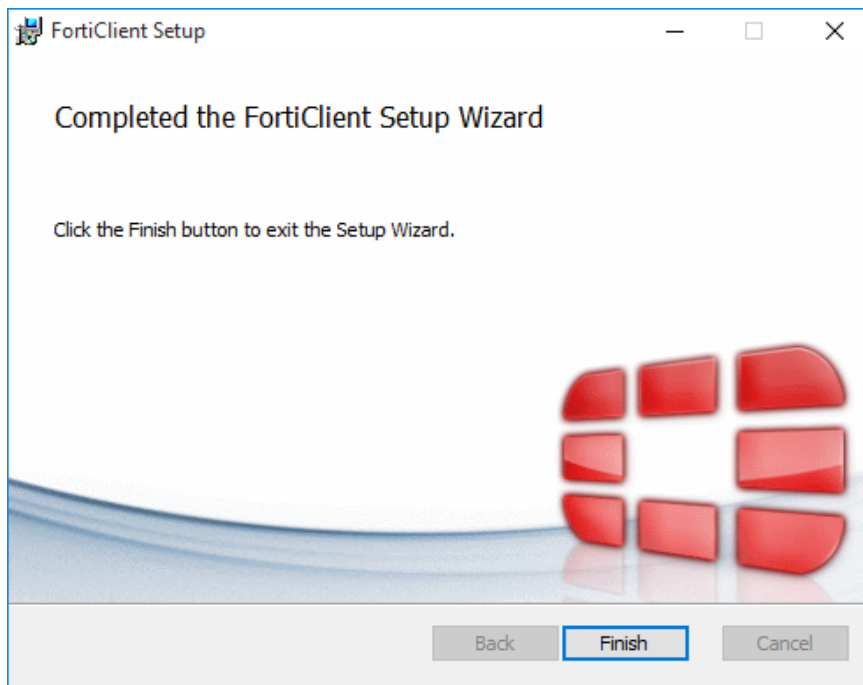
6. Select **Next** to accept the default installation path.



7. Click **Install** to begin the installation. The installation takes approximately 2-3 minutes to complete.



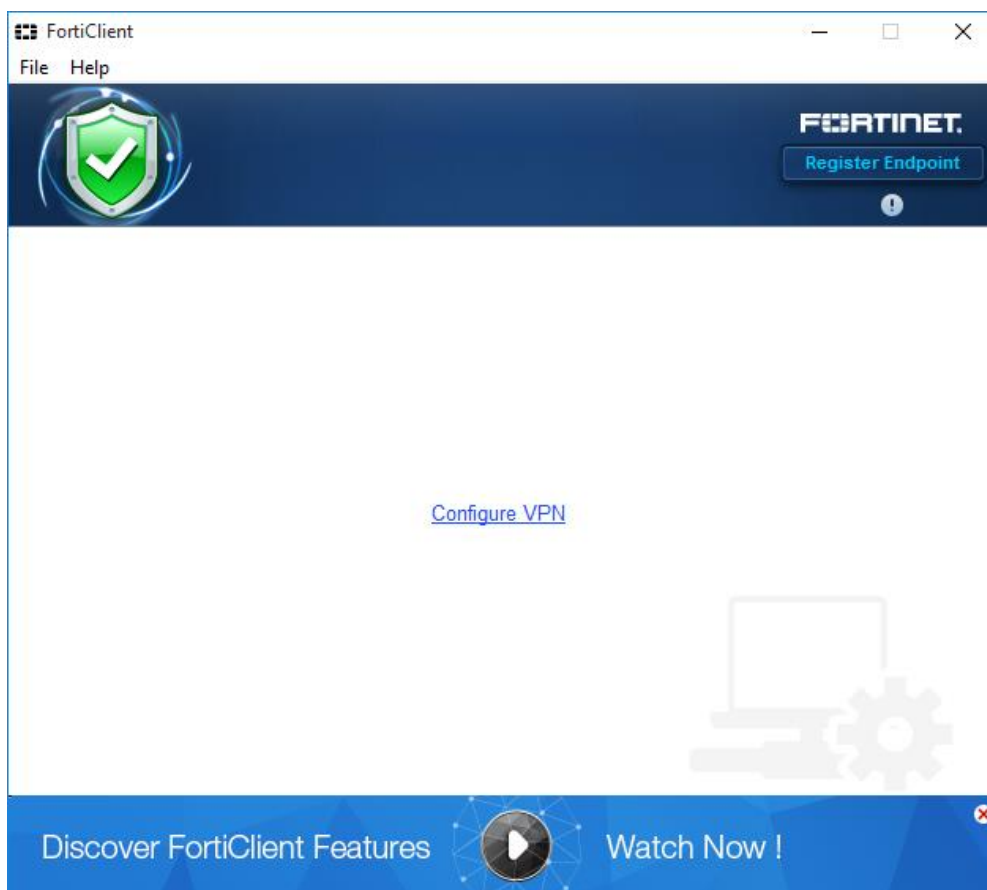
8) Click **Finish** to exit the setup.



Note: You may be prompted to restart after successfully installing the client.

9). Launch the application from the start menu or from the **FortiClient** icon on the desktop.

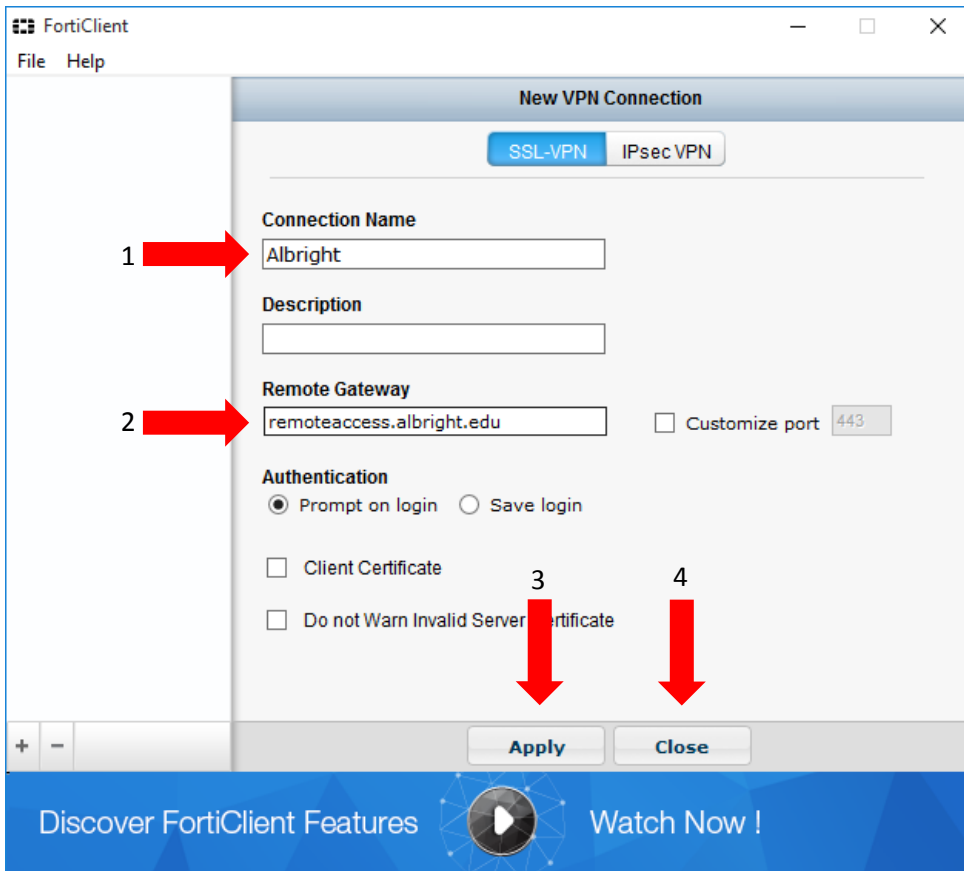
10) Select **Configure VPN**



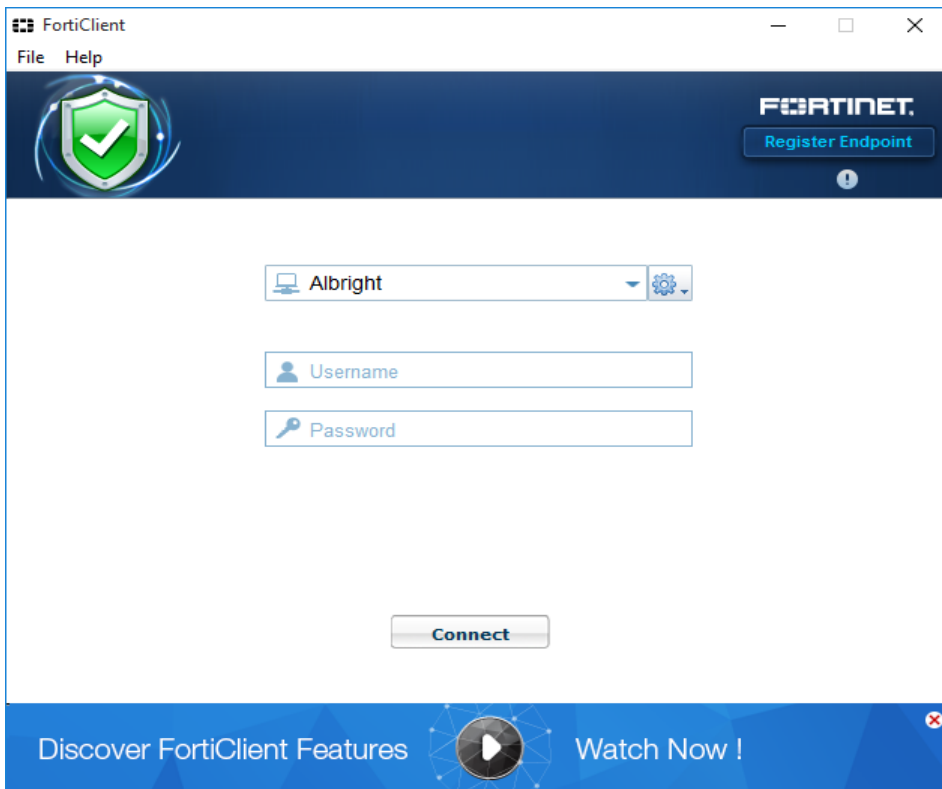
11). Enter the settings below and then select **Apply** and then **Close**.

Connection Name: Albright

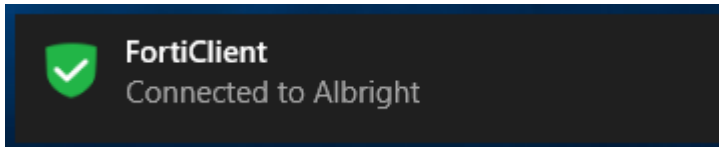
Remote Gateway: remoteaccess.albright.edu



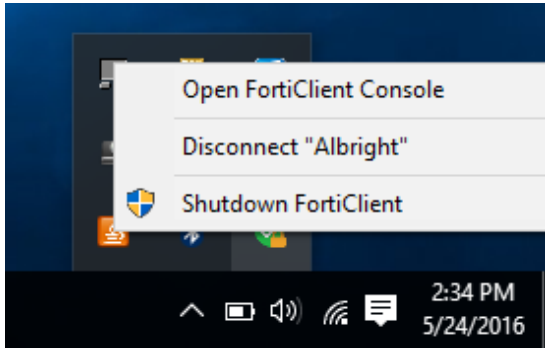
12) At the FortiClient login screen, enter your Lionlink username and password then click **Connect**.



13) Upon successful authentication, a **'Connected to Albright'** notification should appear.



14) To end your remote access session, click on the green shield icon in the system tray and select **'Disconnect Albright.'**



If you have any questions, or would like assistance with the FortiClient setup please contact the Help Desk at helpdesk@albright.edu or 610-921-7676.