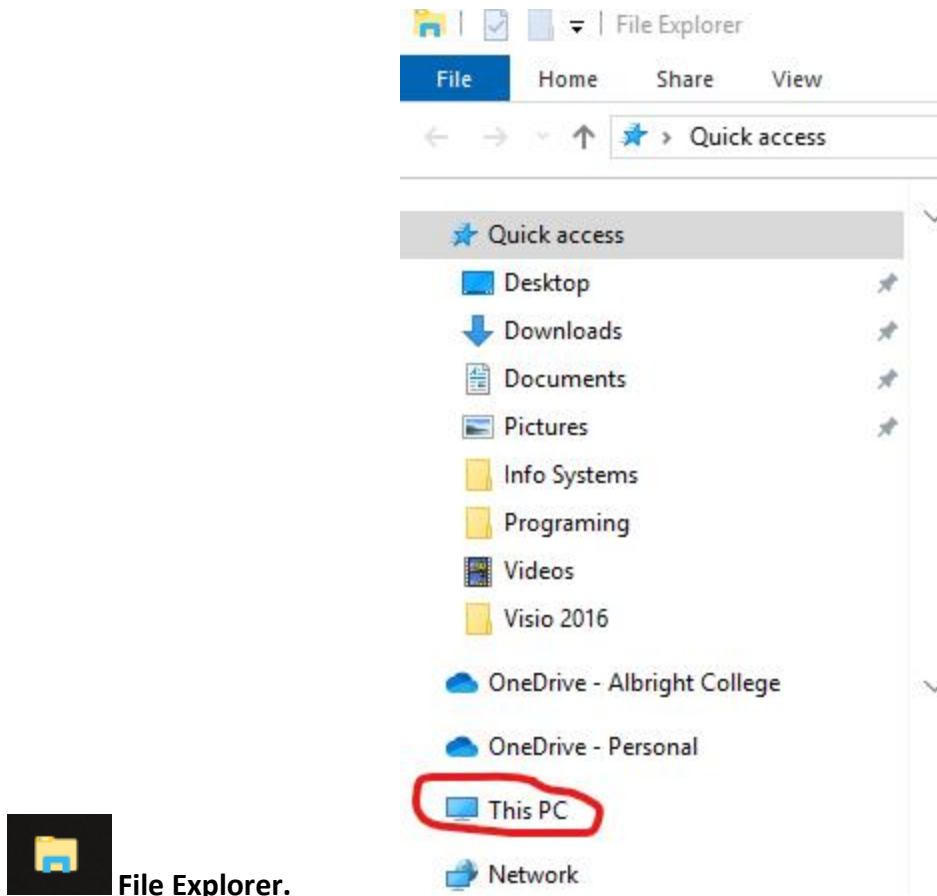


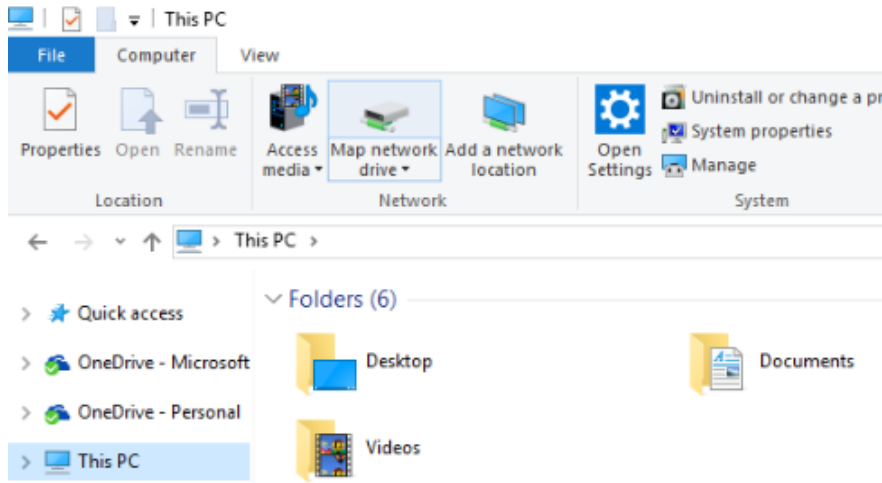
How to setup map my Albright personal Network Storage via VPN on PC?

You can access your Albright personal storage drive by mapping the drive to your laptop or personal desktop. Mapping the drive will allow you to access your stored data and information directly from the Albright network. However, you must be connected to the network to access your personal storage drive in this manner.

1. To begin you must first connect to the Albright VPN. [Click here for more information](#)
2. After the connection to the Albright VPN is made, Open **File Explorer** from the taskbar or the **Start** menu, or press the **Windows logo key + E**.

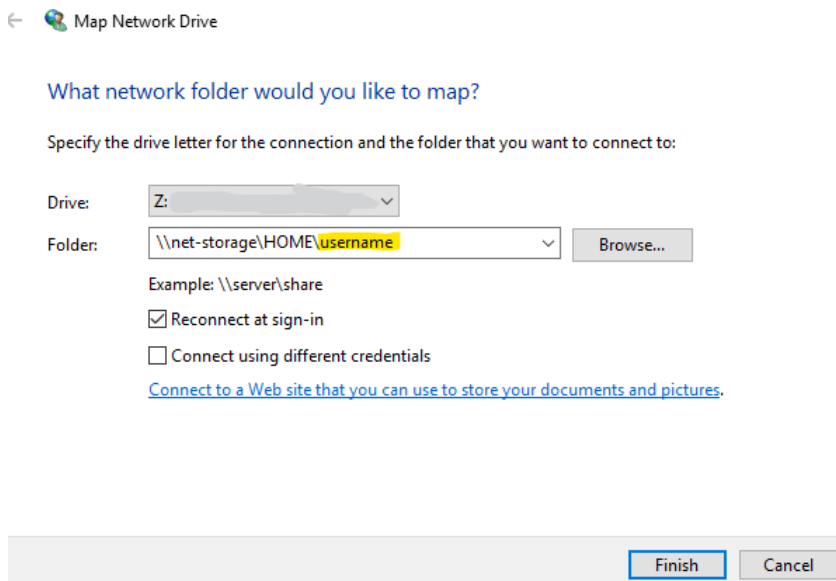


3. Select **This PC** from the left pane. Then, on the **Computer** tab, select **Map network drive**.



4. In the **Drive** list, select a drive letter. (Any available letter will do)
5. In the **Folder** box, for your HOME folder, type [\\net-storage.alb.edu\HOME\username](#) (your Albright username). For your SHARE folder type [\\net-storage.alb.edu\shares](#)

You may be prompted to enter your Albright credentials to connect.



6. Then Select **Finish**. You're all set!