



ADP NEWS



IN THE SPOTLIGHT

Nationally Syndicated Television Program Showcases Albright's Accelerated Degree Completion Program

From left to right, Melissa Wardwell, Director of Accelerated Degree Programs and DCP students Adrian Hennessy, Elsa Speller, and Vickie Shuman pose before taping of "Money Matters Today."

Albright's Accelerated Degree Completion Program was recently showcased on the nationally syndicated television show, "Money Matters Today," Cable News 8 (CN8) Comcast Network. It originally aired on

August 27, 2003. This 30-minute program, hosted by anchor Mary Fay, featured a week-long series on going back to school, including non-traditional aged college students and the many challenges these students face returning to the classroom.

Albright's accelerated students, Vickie Shuman (Lancaster - Business Administration), Adrian Hennessy (Lancaster - Business Administration and Psychology), and Elsa Speller (Lancaster - Psychology) represented the College as part of the show's student panel.

During the interview, students commented about their experiences and the motivating factors influencing their decision to return to school. The chief reasons Albright students cited included the personal desire to complete an unfinished degree, preparation for new career, and/or as a qualification for professional advancement.

Students spoke candidly about balancing their work and personal commitments with the demands of college. Students also commented on how their decision impacted their families and support networks at home and at work and credited these strong personal support networks as an essential factor in their ability to fulfill their educational goals.

Would they do it all over again? The students answered with a resounding "yes." Their decision to return and the sacrifices made were worth fulfilling their goals of finishing their degrees.

In addition to our students, Albright's own Melissa Wardwell, director of the accelerated degree programs, was interviewed about the nature of cohort learning and demographic trends in adult continuing higher education. On these topics, Melissa said that while adult students entering Albright's Accelerated Program continue to represent an increasingly diverse group in terms of socio-economic class, race, and ethnic background, enrollment figures suggest more women than men are returning to the classroom and the average age of students is 35 years of age and older.

Receptions Honoring ADP Students

Meet Albright's President, Henry A. Zimon, Ph.D, Provost David C. Stineback, Ph.D, and members of college administration for an informal reception to honor students and graduates of Albright's Accelerated Degree Completion Program. Enjoy refreshments and learn more about the services that are available to you. Departments represented will include DCP support staff, Financial Aid, Career Development Center, and ADP Program Coordinators.



See page 7 for dates and locations.

Aiming HIGH!

ADP Delivers Corporate Programs in Lancaster County

Accelerated Degree Programs and HIGH Concrete Structures, a division of HIGH Industries, Inc., signed an agreement effective September 17, 2003 to provide a customized workforce development program for HIGH Concrete co-workers in Denver, PA.

This 17-month training module, titled The Leadership Development Program, allows HIGH employees to earn 38 undergraduate college credits. Developed by Albright faculty and HIGH Concrete's Organizational Development/Training Team, the curriculum blends HIGH Concrete's existing leadership development program and job-related learning in Albright's accelerated degree courses. Participants in the program will take courses in business and general studies.

The College's partnership with HIGH Concrete marks the fourth corporate education partnership for Albright's Accelerated Degree Program. Albright has also developed custom training and degree programs for Exelon/Peco Energy, Agere Systems, and a major area healthcare-manufacturing site.



FULL SPEED AHEAD

ADP Announces its Expansion in Lehigh and Chester Counties

Albright College - Exton

Albright College and the Chester County Economic Development Council (CCEDC) signed an agreement effective September 1, 2003 to provide classroom facilities for Albright's Accelerated Degree Programs, undergraduate degree studies, and corporate training programs for area businesses.



On October 15, Albright hosted an open house at the CCEDC's new state-of-the-art facility. Over 35 prospective students interested in completing their bachelor's degrees attended this informational event. The CCEDC is conveniently located at the junction of Route 100 and the PA Turnpike (I-76) Downingtown exit (#312) at the Eagleview Corporate Center, 737 Constitution Drive, Exton.

Albright College - Lehigh Valley

Albright College and Liberty Property Trust signed an agreement effective August 15, 2003 to provide classroom facilities for Albright's Accelerated Degree Programs at Lehigh Valley Corporate Center (LVCC) business park located at 1510 Valley Center Parkway, Bethlehem.

"Albright College is pleased to be able to offer our Lehigh Valley students the convenience of an additional classroom facility. Albright's Accelerated Degree Completion Program will continue to offer classes at the community college campuses. We appreciate the continued support our program is receiving from LCCC and NCCC," said Melissa Wardwell, director of accelerated degree programs.



The College's CCEDC-Exton and LVCC-Bethlehem openings mark Albright's Accelerated Degree Program's eighth and ninth site expansions throughout Eastern and Central Pennsylvania in five years.

Albright

COLLEGE
ACCELERATED DEGREE PROGRAMS

new logo. new name.

In this issue, we are pleased to introduce Albright's new logo and to formally announce our name change from the Graduate and Professional Division to Accelerated Degree Programs (ADP).

This change was initiated and adopted by ADP administration, faculty, and staff who determined that "Accelerated Degree Programs" more accurately describes who we are and what we do. The decision also coincides with the College's decision to separate the Graduate Division into its own department and the unveiling of the College's new logo.

Under Accelerated Degree Programs, we will continue to differentiate between the Accelerated Degree Completion (DCP) program and the Accelerated Degree Start Program (DSP) with their respective acronyms.

This new logo, soon to be seen on everything Albright from letterhead to sweatshirts, is the result of a process to create a consistent graphic image that effectively communicates the College's identity.

Why did Albright need a new logo? Over time, colleges, like people, grow and change. And graphic designs once seen as exciting and fresh can begin to look dated. As part of the College's integrated marketing effort, we took a hard look at the numerous images currently in use and the identity we want to communicate and worked to bring them into sync.

Developing the new logo involved a wide cross-section of Albrightians in a process that began with deciding the qualities we wanted a logo to communicate and ended with testing potential designs to see how well they did that. The logo you see here received high marks across all constituencies, faculty, staff, students, prospective students and parents, alumni, and members of the community.

We think the new logo captures both Albright's innovative, interdisciplinary experience, as well as our long tradition of academic excellence. We look forward to it representing Albright College and the Accelerated Degree Programs well for many years to come.

Students, what do you think? Email your comments to ADP News at dcp@alb.edu and we'll include them in our next issues, "Mail Bag!"

STUDENT SERVICES

Career Development Center

Are you looking forward to securing a new and exciting career when you graduate? Are you aware of the services offered by Albright's Career Development Center?

We are here to help! The staff at the Center can help you update your resume, refresh your job search skills, and provide you with information regarding resume techniques.

For recent graduates and students approaching graduation consider participating in our Reading campus interview program and job fairs.

Reading Campus Interviews

Throughout the year, many companies and organizations throughout Berks County and surrounding counties come to Albright to interview. For more information and a list of participating companies and organizations, visit www.albright.edu/services/careercenter.html.

Central PA Employment Consortium (CPEC) and Internship Fair

Thursday, February 12, 2004

This 16 school consortium hosts an annual job and internship fair at Lebanon Valley Expo Center. Over 120 national and regional representatives will be in attendance. For more information and directions, visit www.cpec.info.

Lehigh Valley Collegiate Career Expo (LVCCE)

Wednesday, February 25, 2004

A consortium of Berks and Lehigh Valley colleges hosts this internship and job fair at the Holiday Inn Conference Center, Fogelsville. This fair will attract local, regional, and national employers for all majors. For directions and information, visit www.secretcareers/fair.html.

If you are interested in participating in Albright's interview program or any of the above listed career fairs, please e-mail your resume to careercenter@alb.edu or telephone us at 610-921-7630. Please contact us if you wish to discuss any of your career planning goals, concerns and needs. We look forward to working with you!

FINANCIAL AID

Merit-Based Aid?

What is Financial Aid? How can I get it? Who or what determines my eligibility? Where does it come from? Is there a limit to how much a student can have?

The answers to these questions, unfortunately, are not usually simple. Actually, sometimes the answers are quite complex. So, to help our students understand the financial aid process, we will address these questions (and others) in a series of hopefully informative articles.

Financial aid is defined as funding to help students with the costs of education.

There are two types of financial aid: merit and need-based. Merit aid is usually scholarships that are awarded based upon criteria determined by the benefactor. With academic scholarships, there may be standards of GPA, class rank, SAT scores, or other measures of academic strength that are used to identify the recipient of the scholarships. Not all scholarships are academic in nature, however. Some scholarships use other criteria, such as nationality, political affiliation, gender, ethnicity, religion, and employment. Many of these scholarships are sponsored by clubs, businesses, professional organization, and special interest groups.

Attention Albright Accelerated Degree Program Information Services & Technology Majors!

Pennsylvania students may also apply for the New Economy Technology Scholarship. Students majoring in a science or technology program with a 3.0 GPA could be eligible for \$3,000 a year. For more details and a printable application, consult the PHEAA website: http://www.pheaa.org/specialprograms/nets/New_Economy_Technology_Scholarship.shtml. Applications are due before December 31, 2003.



STUDENT SERVICES

FINANCIAL AID

continued from page 3

Scholarships, as a rule, do not have to be paid back, so scholarships are the most desirable sources of financial aid. But where do you find this money?

First, you may have resources in your own "backyard." If you are employed, ask your employer if they have a scholarship program. In addition, inquire with your church, volunteer, or social organizations where you are a participating member.

Next, check the Albright website (<http://www.alb.edu/accelerated/scholarships2.html>) frequently. The Financial Aid Office posts any scholarship information it receives from private organizations to the Albright College website. As deadlines come and go, updates are made to the website, so be sure to look at the site regularly for newly posted information.

Also, there are several excellent scholarship websites available on the Internet:

FastWeb: Financial Aid Search Through the Web
www.fastweb.com

SRN Express: Scholarship Resource Network
www.srnexpress.com

College Board Scholarship Search
www.collegeboard.com/pay

CollegeNet MACH 25
www.collegenet.com/mach25

Wired Scholar
www.wiredscholar.com

Absolutely Scholarships
www.absolutelyscholarships.com

Broke Scholar
www.scholarships.brokescholar.com

Scholarships.Com
www.scholarships.com

Library Services

The library frequently receives interlibrary loan requests from students in the DCP program. In addition to providing us with your personal contact information, it will expedite your request if you tell us your cohort and location, e.g. Harrisburg, Psychology.

If you are using the ILL Request link in PsycInfo, use the Department Field to indicate this information.

The library has created an introductory guide, Library Services for the Accelerated Degree Programs, to specifically answer the questions of students enrolled in these programs. A copy of this guide is available at <http://www.albright.edu/library/adpguide.html>.



Federal Income Tax Incentives for Adult Education

Albright College does not provide expert or professional advice on these topics. Please consult a financial advisor or certified public accountant to find out how you may benefit from these programs.

Student Loans Interest Deduction

As part of the 2002 tax changes, interest on student loans for higher education may now be deducted when paid, regardless of the age of the loan.

Most taxpayers, not being claimed as a dependent, with adjusted gross incomes up to \$65,000 (\$130,000) on a joint return may deduct up to \$3,000 for tuition and fees paid to attend an accredited college. Qualifying expenses must be reduced by any non-taxed earnings from employer reimbursement and tuition remission programs or education savings bonds.

The Hope Scholarship is a tax credit worth up to \$1,500. The credit is based on how much you spend on education and how much you earn. The more you earn, the less you get. You can only use the Hope Scholarship credit for two years.

The Lifetime Learning Tax Credit, worth up to \$2,000, is also adjusted based on your income and cannot be claimed in the same year that the Hope Scholarship Tax Credit is used. Unlike the Hope Scholarship Credit, there is no limit to the number of years in which a Lifetime Learning Credit may be claimed for each student. Thus, an individual who enrolls in one college-level class every year would be able to claim the Lifetime Learning Credit for an unlimited number of years, provided the individual meets the income limits and is taking the classes at institutions that meet the eligibility requirements.

For more information about education tax deductions, the Lifetime Learning Tax Credit and the Hope Scholarship visit the IRS website, www.irs.gov.

*Courtesy of Financial Health for Adult Students: <http://www.vjc.edu>

Need Assistance from a Distance?

Our helpful library service staff at Albright's Gingrich Library are here to help you. Please email libraryref@alb.edu or phone 610-921-7211 to request assistance.

Library Service Hours

** Does not include modified hours during breaks.*

Monday-Thursday - 8 a.m. to Midnight
Friday - 8 a.m. to 7p.m.
Saturday - 9 a.m. to 5 p.m.
Sunday - 1p.m. to Midnight

WHO'S NEWS?

ADP Salutes One of Our Own

Keith Badger (Harrisburg - Psychology)

Meet Keith Badger, technical sergeant with the 193rd Special Operations Wing of the Pennsylvania National Guard and student in Albright's Accelerated Applied Psychology/Organizational Behavior Program at Albright College-Harrisburg.

As an electronic communications specialist for Commando Solo, a modified Lockheed C-130 cargo aircraft, Keith has been called to serve on active duty many times making it difficult for him to fulfill his longtime goal to finish his college degree. During his military career, Keith has been stationed for special assignments with the US Air Force in Colorado, Texas, Oklahoma, and Nebraska. Most recently, Keith was deployed to Afghanistan during the early stages of unrest there.

We are happy to report that Keith is home, safe and sound.

On Albright's ADP Program, Keith said, "The psychology program directly ties with my military job. I need a bachelor's degree to qualify to become an officer. I have an age deadline to complete my academic degree, so Albright's DCP program schedule assured me that I would get my degree in time."

Keith also commented on how flexible and supportive Albright's administration and faculty were about his deployment. "I discussed the possibility of getting deployed with my recruiter before I started the program. After I returned, Albright helped me find another cohort to make up the classes that I missed."

Keith missed four courses (20 weeks) but was able to return in time to re-join his original cohort without missing any prerequisite courses. Keith is expected to graduate from the ADCP by September 2004. What are his plans after Albright? Keith intends to complete an additional degree in engineering.

Welcome back and best of luck in all your endeavors, Keith!



Meet the New Members of the ADP Administration

Christy Yerk Smith, M.A.

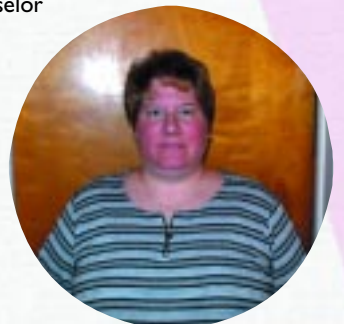
Christy joins ADP as a site coordinator/recruiter for Albright College - Lehigh Valley. In this role, Christy will be responsible for recruiting and providing transfer advising to prospective students, as well as coordinating classroom facilities and support resources for ADP instructors and faculty.

A familiar face to DCP, for the past year Christy has served as an adjunct instructor for the Applied Psychology/Organizational Behavior Program and Crime and Justice at Albright's main campus in Reading, Harrisburg, Blue Bell, and throughout the Lehigh Valley.

Christy received her B.S. in education and M.A. in counseling psychology at Kutztown University of Pennsylvania. She has extensive experience teaching and counseling children, adolescents, and adults and is currently seeking licensure as a Certified Addictions Counselor (CAC).

Within her counseling practice, Christy's areas of counseling expertise include infertility issues, alcohol and substance abuse for recovering addicts and families of addicts, codependency issues, personal growth, sexual abuse, and trauma recovery.

Throughout her career, she has worked within the criminal justice system, inpatient, outpatient and partial hospitalization facilities, as well as serving as a consultant for The Center for Humanistic Change, Bath, PA. Additionally, Christy has served as a counselor at Lehigh University's Counseling Center, and most recently as assistant director of the Counseling Center and adjunct instructor of psychology at DeSales University, Center Valley, PA.



Christy resides in the Lehigh Valley with her three year-old daughter Kiera and husband, Kent.

continued on page 6

WHO'S NEWS?

Meet the New Members of the ADP Administration

continued from page 5

Joanna H. McClintock '03 (MCCC - Blue Bell - Psychology)

Joanna joined ADP in August 2003 as a site coordinator/recruiter for ADP Reading. With her bright smile and quick-witted humor, Joanna has quickly earned the respect and trust of the staff and students she works with.

A 2003 DCP graduate of Albright College - Blue Bell with a bachelor's degree in applied psychology/organizational behavior, Joanna's firsthand experience in the program as well as her background in college human resources and employment recruiting make her a perfect fit for understanding the needs and challenges adult students face returning to college.

Prior to Albright, Joanna served as a human resources assistant at Albright's transfer partner, Montgomery County Community College (MCCC), where she was responsible for coordinating all employment recruiting initiatives on MCCC's Central and West Campuses. During her tenure at MCCC, Joanna completed her associate's degree and served as an alumni ambassador representing MCCC at open houses, special events and community events.

Joanna began her career in education as a director/head teacher for the Under the Rainbow Nursery School in Sumneytown, Pa. from 1989 to 1998.

Joanna is a member of Alpha Sigma Lambda and Psi Chi Honor Societies. Joanna resides in Lansdale, PA with her husband Joe, a high school teacher and is the proud mother of two teachers, son, Andy and daughter, Cara.



Todd DeKay

The newest member of our team, Todd DeKay joins Albright's ADP as a program coordinator and faculty instructor for DCP's applied psychology/organizational behavior program. In this role, Todd will oversee curriculum development, coordinate course, and location teaching assignments for psychology faculty and instructors, as well as teaching within the accelerated and day programs.



Prior to Albright, Todd served as a project director for Arbor, Inc., Media, PA, a marketing research and consulting firm, where he designed custom market research reports for Fortune 500 companies.

Todd received his B.A. and M.A. in psychology from University of Michigan and has completed his Ph.D. training and coursework. Todd is currently completing his dissertation for doctoral candidacy. Todd's academic concentration includes research methodology, personality, and social psychology.

Todd began his teaching career at Madonna University, Livonia, MI, as an adjunct assistant professor of psychology for the evening degree program. In 1997, Todd accepted a position as a visiting professor of psychology at Franklin and Marshall College, Lancaster, PA, where he taught for five years. In 2001, Todd joined Arbor, Inc.

Todd resides in Lancaster with his new wife, Beth (married in August '03) and their two dogs, Reggie and Boordy.

Liz Woodward

Liz also joined ADP in August 2003 as the new assistant director in charge of marketing research, advertising, and publications for ADP. Liz joins us from Sodexho North America, where she worked as a business analyst and regional marketing manager for the corporate contract foodservice division.



A Reading, PA native, Liz attended evening courses at Albright in high school from 1991 to 1992. Liz is a '96 graduate of Wellesley College, Wellesley, Mass., with a B.A. in Sociology and English.

As part of her new duties, Liz will be in charge of writing and editing news stories for ADP News and welcomes any stories or news items you would like to submit for upcoming issues. She may be reached at dcp@alb.edu.

AWARDS AND HONORS

Academic Honors Ceremony

June 7, 2003 - Beta Phi Chapter of Alpha Sigma Lambda inducted 27 new student members and Psi Chi inducted 19 new student members. Thirteen students were inducted as new members of both honor societies.

The group of inductees along with their friends and families were greeted by the Andrea Chapdelaine, Ph. D., dean of undergraduate studies. The Psi Chi induction ceremony was led by Sally Farley, Ph.D., assistant professor of psychology. The Alpha Sigma Lambda induction ceremony was led by Melissa Wardwell, Med. '88, director, accelerated degree programs, and Alpha Sigma Lambda Chapter Advisor. The honorees were presented with certificates and traditional pins.

Sally Lee '02, executive director of the United Way of Pottstown and Upper Perkiomen Valley, was the keynote speaker. In her speech, Sally shared her personal story of perseverance and triumph in completing a degree at Albright.



Keynote speaker, Sally Lee '02 shares her personal story of perseverance and triumph in completing her degree at Albright.

Receptions Honoring ADP Students

continued from page 1

Receptions will be held from 4:00 p.m. to 6:00 p.m. on dates and locations listed below. Invitations will be mailed to you approximately three weeks before your site location's event. For more information, please contact your location's site coordinator.

October 28, 2003

Montgomery County Community College
Central Campus, Blue Bell, PA
340 DeKalb Pike, Blue Bell, PA 18020
dcp-montco@alb.edu • 610-754-6881

November 3, 2003

Commerce Court I
2601 Market Place, Harrisburg, PA
dcp-harrisburg@alb.edu • 717-671-3000

February 4, 2004

Greenfield Corporate Center
1850 William Penn Way, Suite 204
Lancaster, PA
dcp-lancaster@alb.edu • 717-391-8920

March 16, 2004

Montgomery County Community College
West Campus, Pottstown, PA
101 College Drive, Pottstown, PA 19464
dcp-montco@alb.edu • 610-754-6881

April 21, 2004

Lehigh Valley, PA
1510 Valley Center Parkway, Bethlehem, PA
dcp-lehigh@alb.edu • 610-866-5595

"I came from a family of lifelong learners. My aunts and uncles were teachers, my mother received her master's degree at 56, and my father, while not formally educated at a college, was continually reading and looking for new things to teach himself and all of us. While I did well in school and attended Temple University on a part time basis on and off for 30 years, my real classroom was the world."

"My education and ultimate graduation was the single most rewarding experience I have had to enhance my professional life. The fact that I worked in class, applied it to my job every day, and saw the United Way grow because of it was incredibly exciting. I was learning something every day that gave me the opportunity to effect change for good. I was more efficient at building dynamic teams of leaders who shared vision, I was continually learning more about other areas of interest through my cohort members, and I was developing a network of information and resources through some of the most excellent teachers I have ever learned from."

"My education with Albright College set me on fire! It is an achievement I celebrate every day as I carry a different kind of confidence to the work I do. And here we are today to celebrate you. You are on a journey, maybe like mine or maybe a little different. But the time to celebrate your accomplishments so far is right now. Know you are different. Recognize what you have achieved and thank all of those around you who have journeyed with you."

"With this new recognition, take the words of Thoreau and live them...Go confidently in the directions of your dreams! Live the life you've imagined."

"My warmest congratulations to all of you."

AWARDS AND HONORS



Sigma

Lambda

This national honor society was formed in 1946 to acknowledge the special achievements of adults who accomplish academic excellence while balancing the competing interests of home, community, and work. Honorees represent the highest ten percent of all adult students completing 24 or more credits at Albright College.

Congratulations to the following Albright accelerated student inductees:

Steven P. Bosch, Madelyn White Buckwalter, Michael, A. Coonan, Jennifer Cox-Mochan, Mark S. Dudash, Janis M. Erney, Jeanette M. Fitzgerald, Stephanie S. Funk, Lorenzo Garza, Adrian Scott Hennessy, Sheila M. Hogue, Rodney E. Kitchen, Troy J. Klink, Helen M. Kohr, Daniel D. Leffel, Tonya L. Lucas, Joanna Hogan McClintock, Richard J. Mochan, Laura S. Rineer, Betty Seal Russo, Hope A. Shaub, Maria F. Vonau, Jennifer H. Wales, Melanie Y. Walters, Gina L. White, Karen L. Wroten, and Jessica R. Zasadni.



Psi Chi is the National Honor Society for psychology, founded in 1929 for the purposes of encouraging, stimulating, and maintaining excellence in scholarship, and in advancing the science of psychology. Honorees represent the top third of graduating adult students with a minimum GPA exceeding 3.7.

Congratulations to the following Albright accelerated student inductees:

Steven P. Bosch, Jennifer Cox-Mochan, Robert L. Deibler, Yvonne Renee DeSalle, Stephanie S. Funk, Bethany R. Gardner, Adrian Scott Hennessy, Sheila M. Hogue, Joanna Hogan McClintock, Richard J. Mochan, Deemer L. Morrow, Jr., Patricia A. O'Donnell, Hope A. Shaub, Linda J. Soto, Melanie Y. Walters, Margaret E. Weitzel, Gina L. White, Karen L. Wroten, and Jessica R. Zasadni.

ADP Announces the Foundation of the Green Lee Achievement Award

June 7, 2003 - The establishment of the Green Lee Achievement Award was announced during the pre-commencement dinner celebration on main campus. The award was created to honor both Ron Green, Ph.D., '62, dean of the graduate and professional division and Jerry Lee, Ph.D., former director of the DCP program.

The award was presented by Andrea Chapdelaine, Ph.D., dean of undergraduate studies, who recognized their efforts as "tremendous work and dedication to the establishment and growth of the Albright College Degree Completion Program. The impact of this program on those involved - students, faculty, and staff, cannot be overestimated. They have made a significant and lasting difference in the professional and personal lives of countless people." Andrea also noted that "we cannot adequately express our gratitude and admiration. Our most deep-felt and sincerest thanks."

The Green Lee Achievement Award is designed to recognize academic achievement of students in each graduating DCP class. Several contributions to the award have already been made in their honor.

For more information on how you can make a contribution to the Green Lee Achievement Award, please call 888-253-8851 or email dcp@alb.edu.



COMMENCEMENT CHRONICLES

Summer 2003 Commencement Recap

June 14, 2003 - Seventy-six students graduated in Albright's fifth commencement ceremony for the accelerated degree program, held in the Memorial Chapel on Albright's main campus, Reading, PA.

Ceremonies began with speaker, William M. King, Ph.D., professor of religious studies who delivered the Invocation, Benediction, and conferred a Honorary Degree, a Doctor of Divinity, to the Rev. Dr. Dorothy Watson Tatem.

Watson Tatem, an Albright Trustee, serves as the director in the Office of Urban Ministries of the Eastern Pennsylvania Conference of the United Methodist Church (UMC) delivered the Commencement Address. As this role, Watson Tatem's coordinates and implements strategies for church and community development for 128 churches in the 20 urban areas of the Conference.

Jennifer H. Wales '03 accepted degrees on behalf of accelerated students. Scott Wolfe '79, President, Albright College Alumni Association presented words of welcome to new graduates. Vocalist, Kirsten Becker '94, opened the afternoon ceremonies with "The Star Spangled Banner," closed the ceremonies with the Albright Alma Mater.



Bag pipes lead the commencement procession.

Imparting Words of Wisdom: 2003 Student Commencement Speeches

Deemer Morrow'03 (Reading - Psychology), Pre-Commencement Speaker "My Journey"



Ten years ago, when Deemer began his educational journey, he never imagined that he would be standing in front of an audience as a pre-commencement speaker.

Deemer began his educational journey in order to help his daughter with her learning disability and found that he enjoyed the field of psychology. After getting his associates degree he searched for one year before deciding to attend Albright to pursue his bachelors degree. He applied to the Albright DCP applied psychology/organizational behavior program based upon the College's reputation and the strength of the psychology curriculum.

"The things I will always remember about Albright are the excellent professors. The instructors were always ready to help and they understood that we were all working adults. My classmates and I had some tough times, but there was always someone there to help."

"It has been a great experience at Albright. I will always remember my days here with great pride. I never imagined how this journey would change me. My original goal at Albright was just to get my degree. In the process I met some good friends and learned from the best professors."

"If asked, "Would I do it again? My answer is Yes. Was it tough at times? Yes, but it was worth it in the end. I am honored to be an Albright graduate."

Deemer quoted Ursula Leguin, who once said, "It is good to have an end to journey toward; but it is the journey that matters, in the end."

"I need to say thank you to the Albright administration; my cohort; the faculty, my children and finally, my wife. Thank you, you helped make this a great experience for me."

continued on page 12

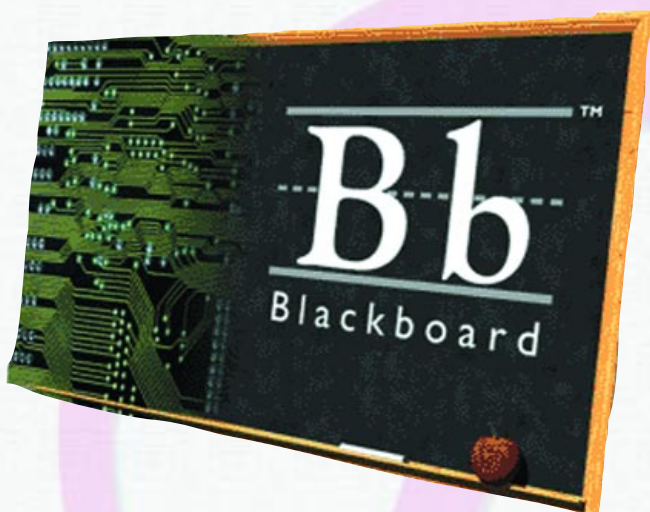
ANNOUNCEMENTS

From the Desk of the Dean:

Would you like to do something for your alma mater? Looking for a way to support ADP that does not cost you money or much time? Help us grow our textbook libraries.

Albright is establishing a library for each location of all DCP used course textbooks for each program major. These libraries will enable students to have access to reference materials while taking courses, as well as allow pending students the opportunity to prepare for the curriculum as they await their cohort's start date.

In order to realize this goal, we are asking our alumni to donate any used textbook to your program's site location. To make your contribution, please contact Cindy Werner at (610) 921-7594 or cwerner@alb.edu. Please note that Albright will assume any standard mail shipping charges and provide you a receipt for the value of your books for tax deduction purposes.



New Blackboard Student Site

Albright has a new Blackboard student site, specifically for ADP students. With this new information medium, students and faculty will be better able to communicate about events, course assignments, due dates, and special announcements. Student and faculty contact information is available. Additionally, all accelerated degree start courses (DSP) will be posted for students.

ANNOUNCEMENTS

DCP Commencement Countdown

Attention pending graduates and faculty. Please mark the following dates. Personal invitations will be mailed to you approximately 3-4 weeks before events. Events held at Albright College's main campus in Reading, PA. For more information, call 888-253-8851.

DCP Honors Ceremony

Saturday, November 22, 2003

South Lounge

3:30 p.m. - Reception

4:30 p.m. - Honors Ceremony for Alpha Sigma Lambda and Psi Chi Societies

DCP Pre-Commencement Dinner

Saturday, November 22, 2003

Albright College Campus Center

5:30 p.m. - Cocktails

6:30 p.m. - Dinner

Commencement Ceremony

Sunday, December 14, 2003

Memorial Chapel

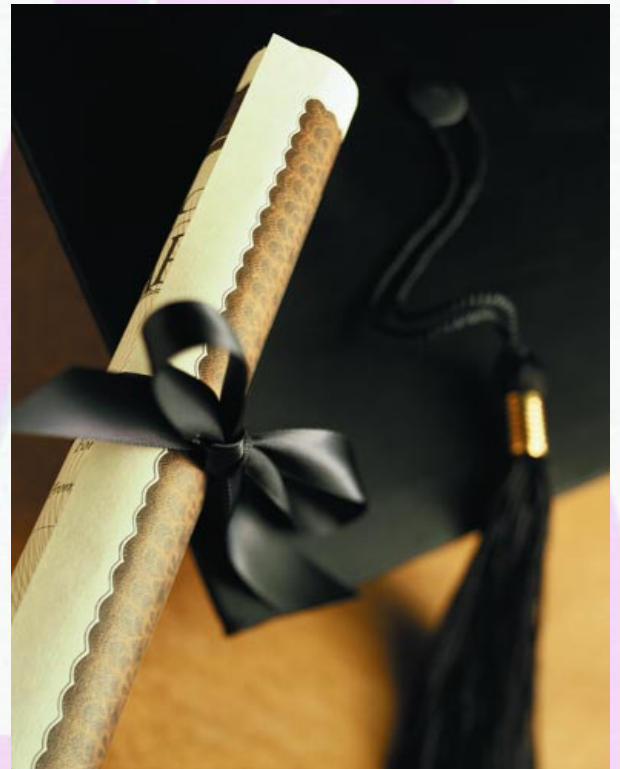
2:00 p.m.

Looking Ahead?

Spring 2004 Commencement

Pre-Commencement Dinner will be held on Saturday, May 15, 2004.

Commencement will be held on June 5, 2004.



ADP News Contributor's Corner

Special thanks to ADP's Corporate Recruiter, Don Wardwell for his commitment to keeping the ADP News letter "alive" through his contributions as researcher, archivist, writer and editor. Donald J., I hope I can "fill your shoes."

- L.W.

Thank you to the following Albright College administrators and department offices for their contributions to this issue.

Marguerite Borst, Assistant Director, Financial Aid Services

Andrea Chapdelaine, Ph.D., Dean of Undergraduate Studies

Sandy Stump, Reference/Systems Librarian, Library Services

Dr. Stephen Klein and staff, Career Development Center

For questions or comments pertaining to articles featured in this issue of ADP News or story ideas you would like to see featured in ADP News, please email us at dcp@alb.edu.

*Don Wardwell and Liz Woodward,
Accelerated Degree Program*

COMMENCEMENT CHRONICLES

Imparting Words of Wisdom: 2003 Student Commencement Speeches

continued from page 9

Adrian Hennessy '03 (Lancaster - Business and Psychology)

First and foremost I wish to convey our gratitude to the faculty and staff of Albright College. In the past 21 months we have been honored to have been taught by some extraordinary professors. From you we have gained more than a degree in business, information technology, or psychology. As adults we each had experiences, both in work and in life. As students we learned how to use our experiences to better ourselves. Determination, dedication, and drive became achievement, confidence, and success for each one of us.

This brings me to my second point, which is the cohort experience. We learned that the knowledge we gained was greater because of the friendships we formed. The people in my cohort have become my associates, partners, allies, and friends for life. Five weeks is a very short time to acquire a solid understanding in any subject. Yet we have been able to do it for two reasons. We had, as I said, a talented and learned faculty. We also had the comfort of the same group of people to share this experience. We have supported each other as members of our cohort. Personally, I have had the opportunity to be a part of several different cohorts. The bonds that are formed within each cohort make the accelerated education experience possible.

This brings me to my final point, family. The friendships forged here I know will last forever. Each one of us has become extended parts of each other's families. Each one of us has had on more than one occasion, through the past 21 months, needed and taken advantage of the support given freely by our families, who I imagine, are even more thankful that this experience has come to an end. I know that I have not been the easiest person to live with throughout this program. However, with their support and the support of many friends and coworkers we have succeeded. During the course of the Lancaster business program, three of the students, possibly as a cry for more support, were married. As we were now members of the family, we were there to help each of them celebrate their special day.

What started as simply a way to get an education and a degree has in fact been a life learning experience. We are thrilled to be a part of Albright College. You have, indeed, taught us a great deal. More importantly, through this experience, we now have more friends and an even larger group that we can call our family.



CONGRATULATIONS CLASS OF 2003!